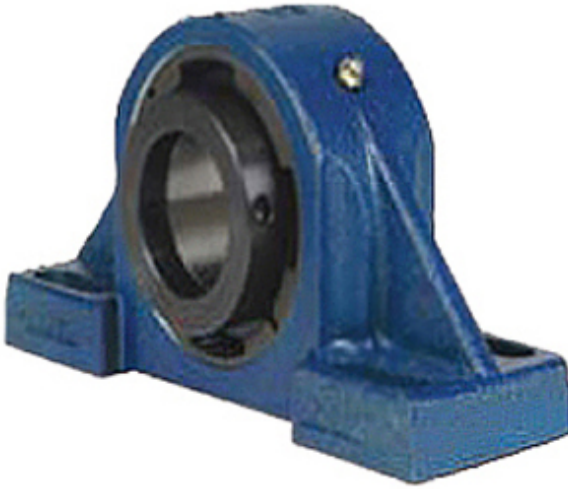




## BEARING-SINGAPORE (PTE)LTD.



3.937 Inch | 100 Millimeter x 4.13 Inch | 104.902 Millimeter x 4.937 Inch | 125.41 Millimeter QM INDUSTRIES QVPH22V100SB Pillow Block Bearings

Bearing No. QVPH22V100SB

QVPH22V100SB Bearing 2D drawings and 3D CAD models

|                           |   |
|---------------------------|---|
| Category                  | Pillow Block Bearings   |
| Inventory                 | 0.0   |
| Manufacturer Name         | TIMKEN  |
| Minimum Buy Quantity      | N/A   |
| Weight                    | 34.958  |
| EAN                       | 0883450240338   |
| Product Group             | M06288  |
| Number of Mounting Holes  | 4   |
| Mounting Method           | V Lock  |
| Housing Style             | 4 Bolt Pillow Block   |
| Rolling Element           | Spherical Roller Bearing  |
| Housing Material          | Cast Steel  |
| Expansion / Non-expansion | Non-expansion   |
| Mounting Bolts            | 3/4 Inch  |
| Relubricatable            | Yes   |
| Insert Part Number        | 22222   |
| Seals                     | Double Lip Nitrile Rubber   |
| Housing Configuration     | 1 Piece Solid   |
| Inch - Metric             | Metric  |
| Other Features            | Double Row   Single Nut   SAF Style   |
| Long Description          | 4 Bolt Pillow Block; 100MM Bore; 125.41MM Base to Center Height; V Lock Mount; Spherical Roller |



## BEARING-SINGAPORE (PTE)LTD.

|                               |  |
|-------------------------------|--|
|                               | Bearing; 301.625MM<br>Minimum Bolt Spacing;<br>368.3MM Bolt Spacing<br>Maximum; Relubricatable;<br>Cast Steel; Doubl |
| Category                      | Pillow Block   |
| UNSPSC                        | 31171511   |
| Harmonized Tariff Code        | 8483.20.40.80  |
| Noun                          | Bearing  |
| Keyword String                | Pillow Block   |
| Manufacturer URL              | <a href="http://www.qmbearings.com">http://www.qmbearings.com</a>  |
| Manufacturer Item Number      | QVPH22V100SB   |
| Weight / LBS                  | 77   |
| Nominal Bolt Center to Center | 13.2 Inch   335.3 Millimeter   |
| D                             | 4.13 Inch   104.902 Millimeter   |
| Actual Bolt Center to Center  | 0 Inch   0Millimeter   |
| d                             | 3.937 Inch   100 Millimeter  |
| B                             | 4.937 Inch   125.41 Millimeter   |
| Bolt Spacing Maximum          | 14.5 Inch   368.3Millimeter  |
| Bolt Spacing Minimum          | 11.875 Inch   301.625Millimeter  |