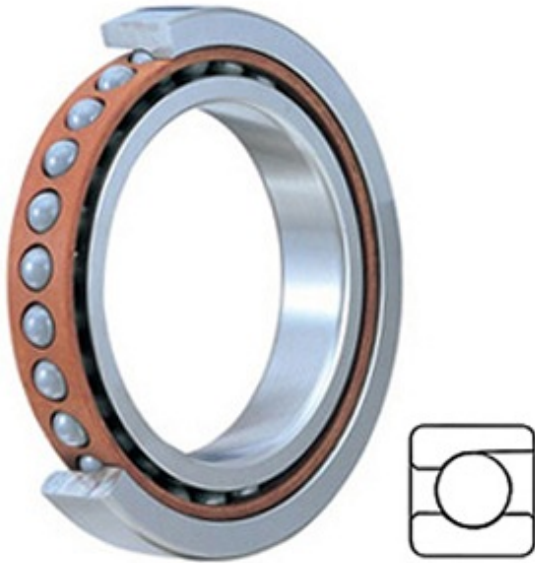




## BEARING-SINGAPORE (PTE)LTD.



5.512 Inch | 140 Millimeter x 8.268 Inch | 210 Millimeter x 1.299 Inch | 33 Millimeter TIMKEN 2MM9128WI SUL Precision Ball Bearings

Bearing No. 2MM9128WI SUL

2MM9128WI SUL Bearing 2D drawings and 3D CAD models

Category	Precision Ball Bearings
Inventory	0.0
Manufacturer Name	TIMKEN
Minimum Buy Quantity	N/A
Weight	3.556
EAN	0087796226104
Product Group	B04270
Enclosure	Open
Precision Class	ABEC 7   ISO P4
Material - Ball	Steel
Number of Bearings	1 (Single)
Contact Angle	15 Degree
Preload	Light
Raceway Style	1 Rib Outer Ring
Cage Material	Phenolic
Rolling Element	Ball Bearing
Mounting Arrangement	Universal
Flush Ground	Yes
Inch - Metric	Metric
Other Features	Single Row   Angular Contact   Super High Precision
Long Description	140MM Bore; 210MM Outside Diameter; 33MM Width; Open Enclosure; ABEC 7   ISO P4 Precision;



## BEARING-SINGAPORE (PTE)LTD.

	Steel Ball Material; 1 (Single) Bearings; 15 Degree Contact Angle; Phenolic Cage Material; 1 Rib Outer Ring R
Category	Precision Ball Bearings
UNSPSC	31171531
Harmonized Tariff Code	8482.10.50.28
Noun	Bearing
Keyword String	Angular Contact Ball
Manufacturer URL	<a href="http://www.timken.com">http://www.timken.com</a>
Manufacturer Item Number	2MM9128WI SUL
Weight / LBS	7.84
B	1.299 Inch   33 Millimeter
d	5.512 Inch   140 Millimeter
D	8.268 Inch   210 Millimeter